
WELCOME TO ROTTERDAM. MARITIME CAPITAL OF EUROPE.

.....



An aerial photograph of a large industrial port facility, likely a refinery or chemical plant, situated along a wide waterway. The facility features numerous large, white, cylindrical storage tanks arranged in rows. In the foreground, a large ship is docked at a pier, with a crane or derrick extending over the water. The water is a deep greenish-blue, and the sky is bright blue with scattered white clouds. The overall scene depicts a major maritime hub.

ROTTERDAM. MARITIME CAPITAL REGION

THE SUBCLUSTERS.



ECONOMIC IMPACT.

ADDED VALUE:

27,5 BLN EUR

EMPLOYMENT:

244,400 Employees

MARITIME BUSINESSES:

5000+ Maritime Businesses

* Greater Rotterdam region (Incl. Rotterdam, Drechtsteden and Schiedam)

MARITIME ECONOMIC STRATEGY

An aerial photograph of a massive port terminal, likely a container port, showing hundreds of colorful shipping containers stacked in neat rows across a large paved area. Numerous gantry cranes are positioned along the waterfront, ready for loading and unloading. The port is situated on a large body of water, with several ships visible in the harbor. In the background, there are industrial structures, including large storage tanks and buildings, under a bright blue sky with scattered white clouds. The overall scene depicts a highly active and organized maritime logistics hub.

HISTORIC.

BACKGROUND PORT REGION.

BEFORE THE 19TH CENTURY

Port and city are physically and functionally one city.



BEGINNING 20TH CENTURY

Port grows outside of city limits.
Needs space for refineries and containers.



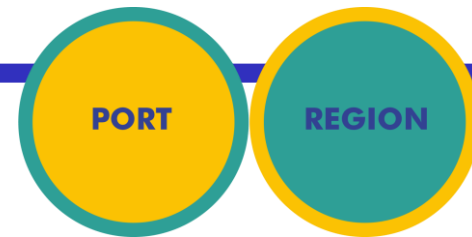
END 20TH CENTURY

Port develops and needs a lot of space.
City centre is renewed.



21ST CENTURY

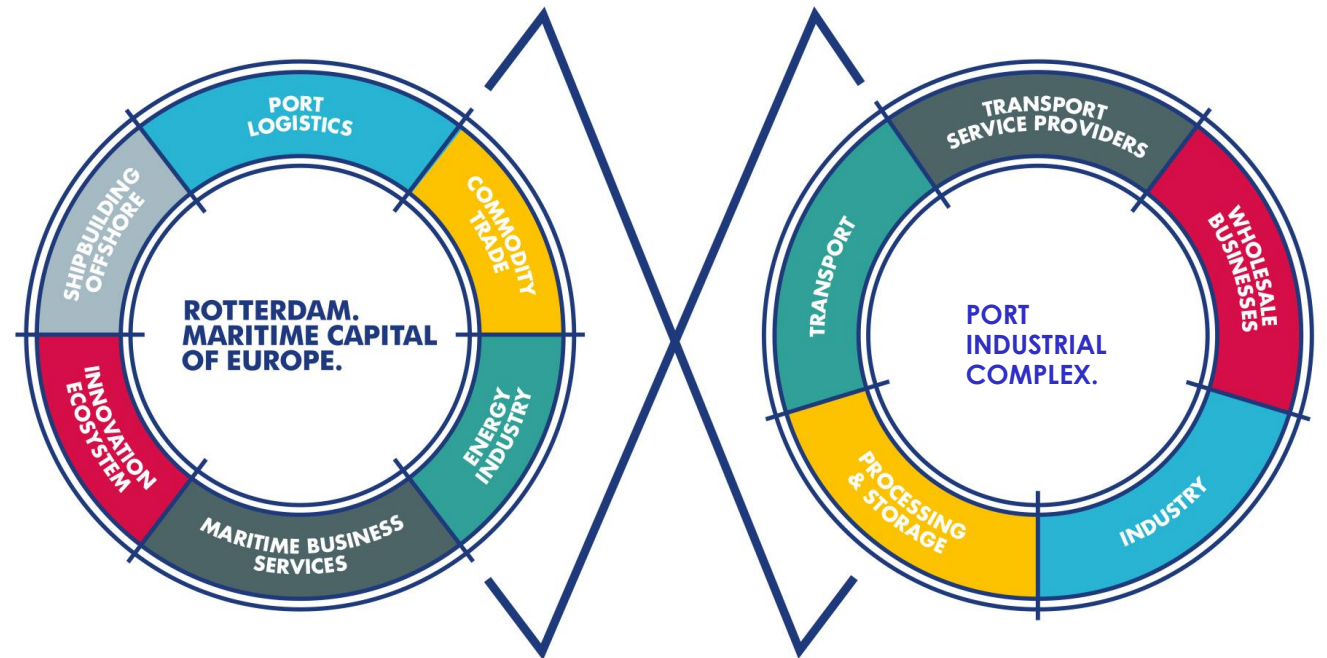
Globalisation, transition and intermodalism change role of the Port, redevelopment of the city strengthens the Port-City relationship.



STARTING POSITION

The region, city and port are interconnected. The Rotterdam strategy (RMC) invests in strengthening this relation between region, city and port to ensure and preserve a future-proof port economy.

The success of the port will mean the success of the city and the region and vice versa.



MAIN GOAL.

The Rotterdam Maritime Capital Strategy creates the right conditions for

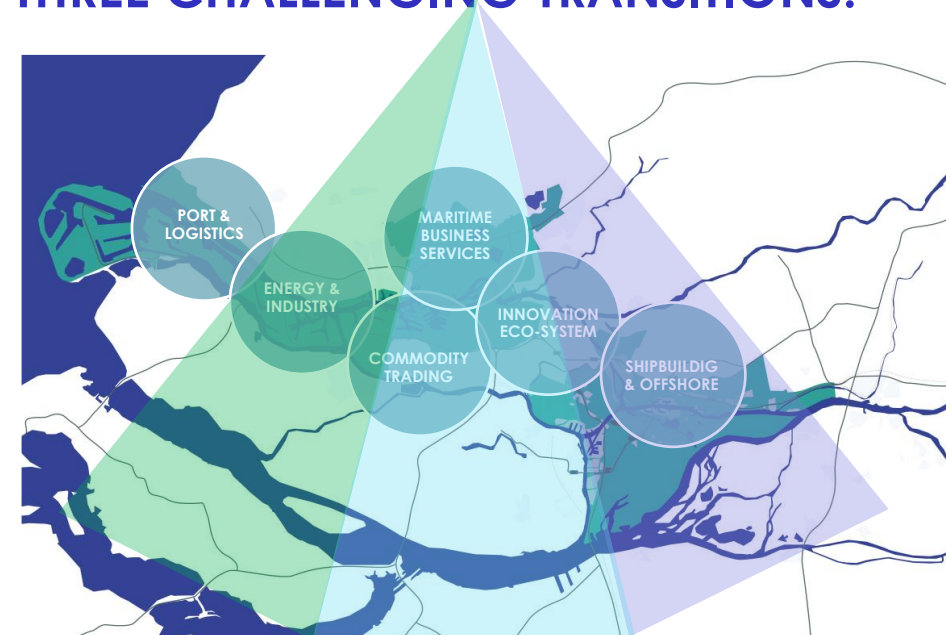
a future-proof regional maritime cluster with excellent competitive position. This regional maritime cluster is recognised as the maritime capital of Europe, both nationally and internationally.

To realise this we need partners!

RMC STRATEGY

- I. We focus on three main transitional developments (**circularization, energytransition and digitalisation**)
- II. We created a distinctive maritime brand to promote our region on a national and international level: Rotterdam. Maritime Capital of Europe.

THREE CHALLENGING TRANSITIONS.



CIRCULARIZATION.

ENERGY TRANSITION.

DIGITALISATION.

MISSION. VISION.

MARITIME PORT SECTOR.

VISION.

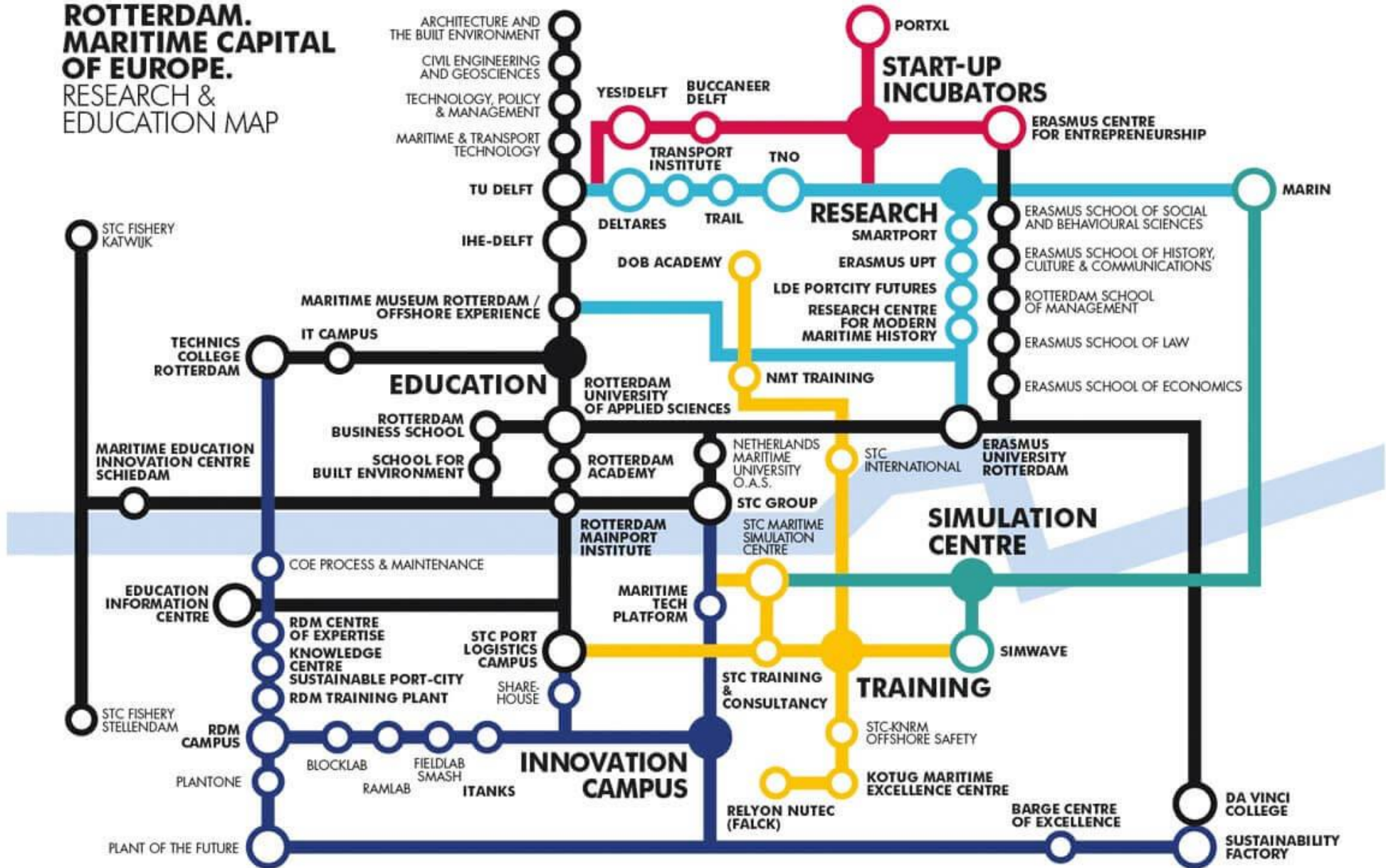
In 2030, Rotterdam will be the undisputed maritime capital of Europe. The Rotterdam region harbours the most complete and innovative collection of maritime actors. Within 30 kilometres of the Rotterdam Central District, everything related to shipping is available: The maritime capital is the combination of excellent transport & logistics, high tech shipbuilding, vessel maintenance & repair, maritime business services such as insurance, legal counsel, financing, consultancy and high-tech offshore industry. It is the point of assembly for the maritime headquarters of shipping companies, shipwrights and commodity traders. By continuously developing our expertise, putting emphasis on our ability to innovate and develop talent, Rotterdam Maritime Capital of Europe is internationally renowned. Through a healthy focus on sustainability and port-city relationships, we guarantee a distinctive and attractive maritime capital.

MISSION.

A maritime network that encompasses the full extent of the maritime cluster, to strengthen and present Rotterdam as the maritime capital of Europe.

ROTTERDAM. MARITIME CAPITAL OF EUROPE.

**ROTTERDAM.
MARITIME CAPITAL
OF EUROPE.**
RESEARCH &
EDUCATION MAP



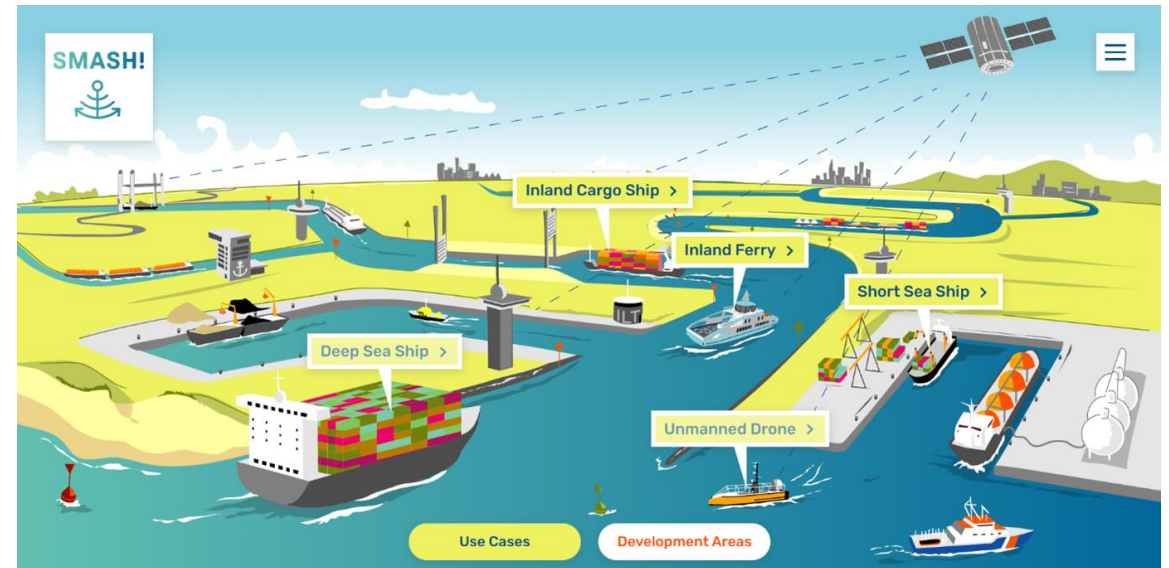
PROJECTS: SMASH!

Netherlands Forum for Smart Shipping (SMASH!). Brings the Dutch maritime sector together to implement smart shipping.

In the Netherlands, a large number of organizations and companies are working on smart shipping and developments in the field of autonomous sailing. They developed a roadmap to tackle all challenges.

We are looking for cooperation to develop use cases (for inland shipping, deep sea, port optimization).

[SMASH! - Digital transformation. Full speed ahead. \(smashroadmap.com\)](https://smashroadmap.com)



MARITIME BUSINESS SERVICES

The city has a large concentration of companies active in the **maritime business services** sector.

- FINANCIAL SERVICES
- INSURANCE
- LEGAL ADVICE
- ARBITRATION
- TAX CONSULTANCY
- SHIP CLASSIFICATION
- CUSTOMS ADVICE
- SURVEYING
- SHIP BROKING
- EDUCATION
- CONSULTANCY

MARITIME BUSINESS SERVICES

- **The industry has an open attitude towards innovation:** For example, financing solutions for autonomous shipping (ABN) and Insurance (Boonk van Leeuwen);
- Rotterdam has a focus on **strengthening the network;**
- and **knowledge sharing** (develop and distribute specific industry knowledge to apply new innovations like hydrogen, autonomous shipping).

