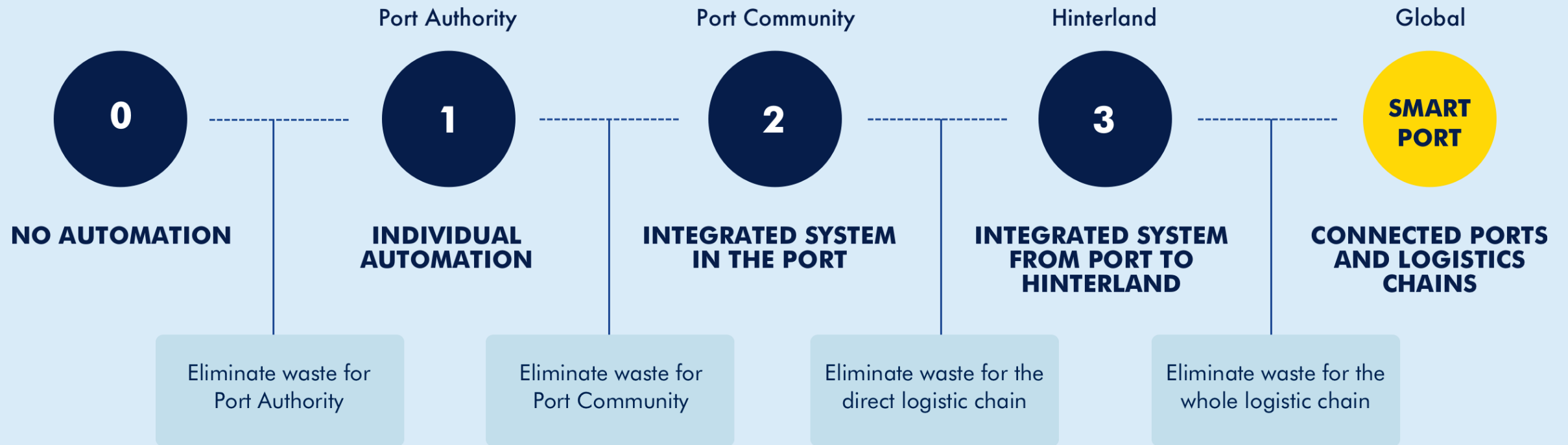


Port of Rotterdam: Optimising supply chains through digitisation



Step by step towards a digital port



Optimising supply chains through digitisation



Navigate



SCOPE



PortXchange



Cargo Tracker



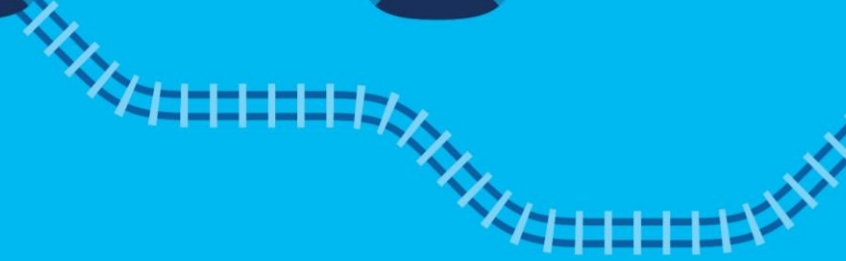
Shiptracker

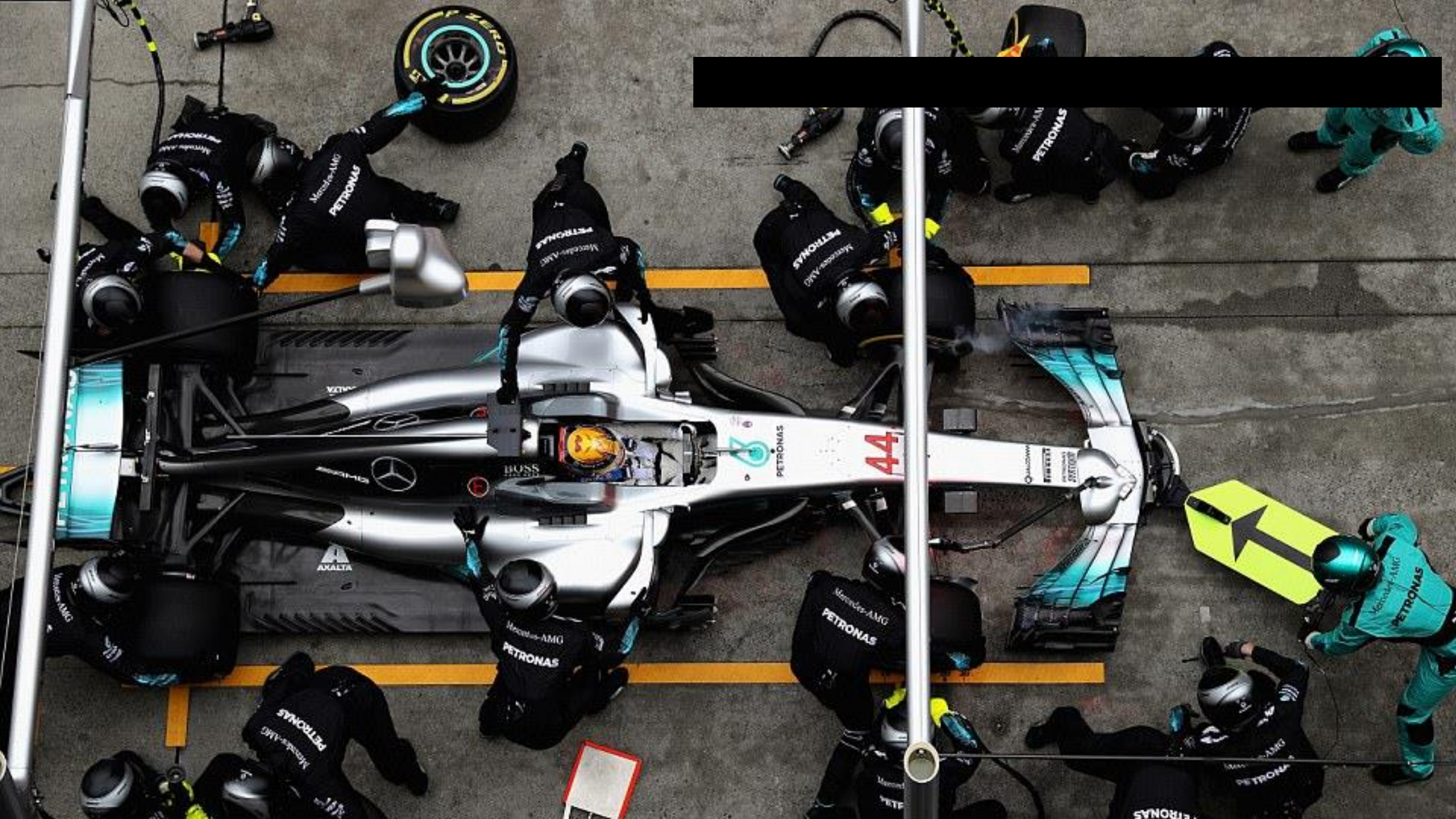


OnTrack

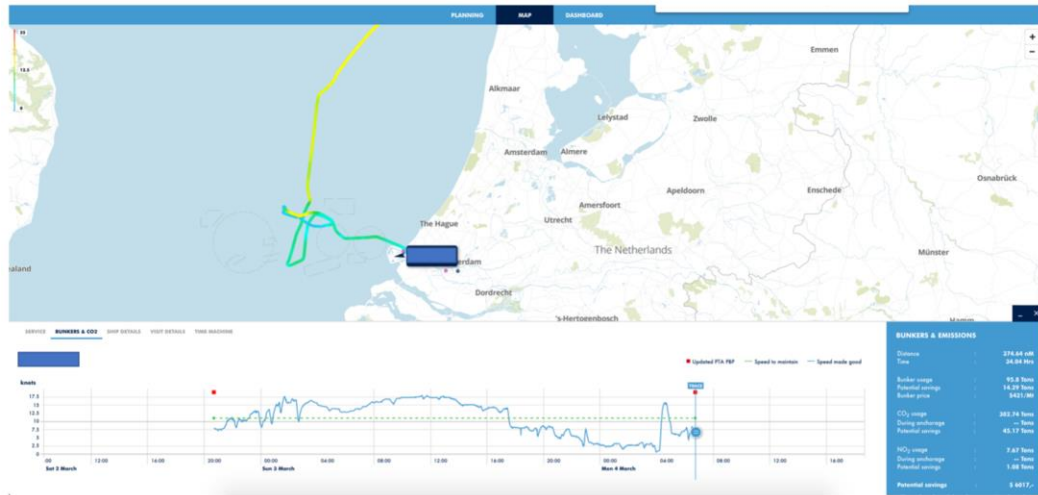


Nextlogic

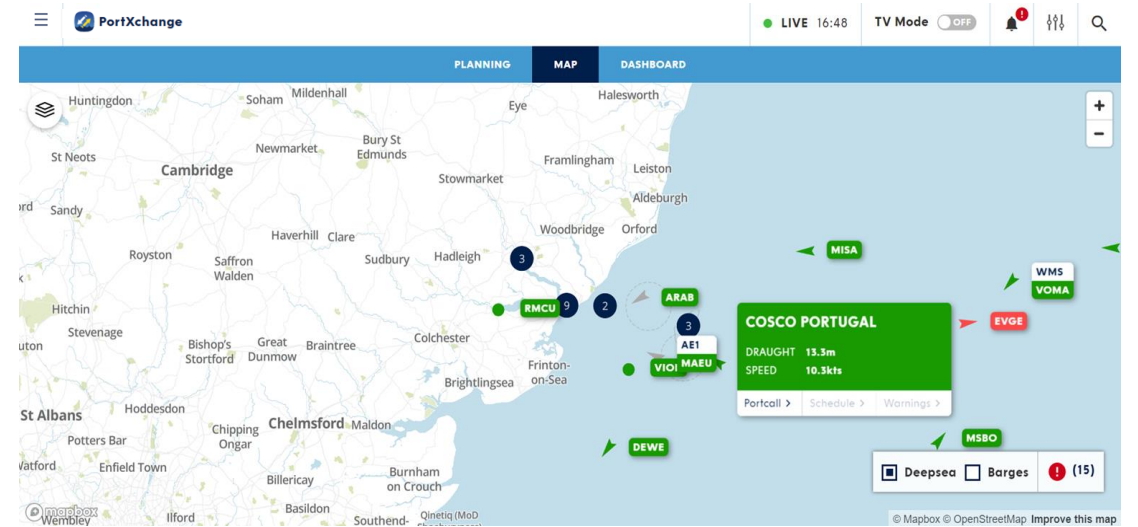




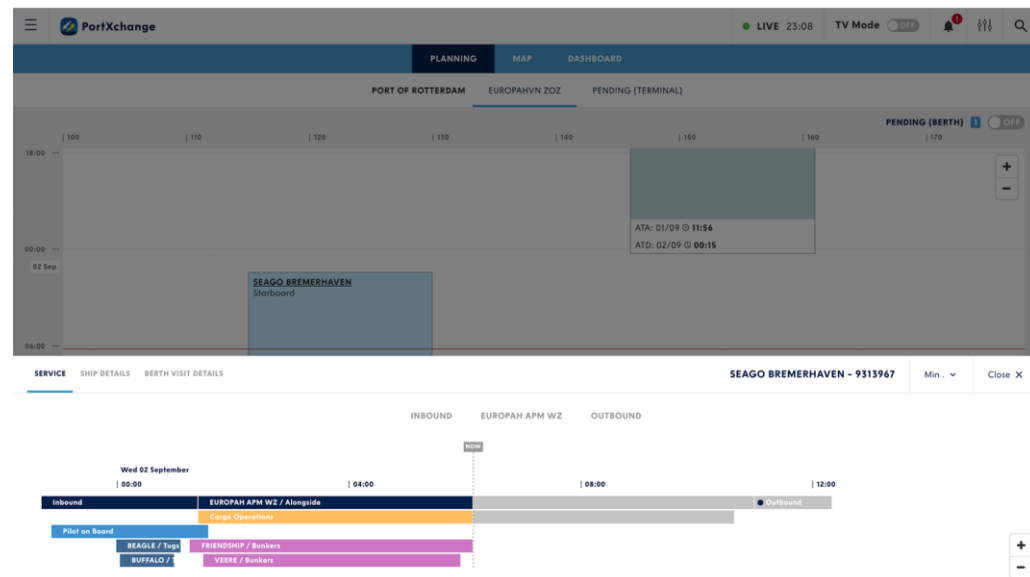
Just-in-Time arrival



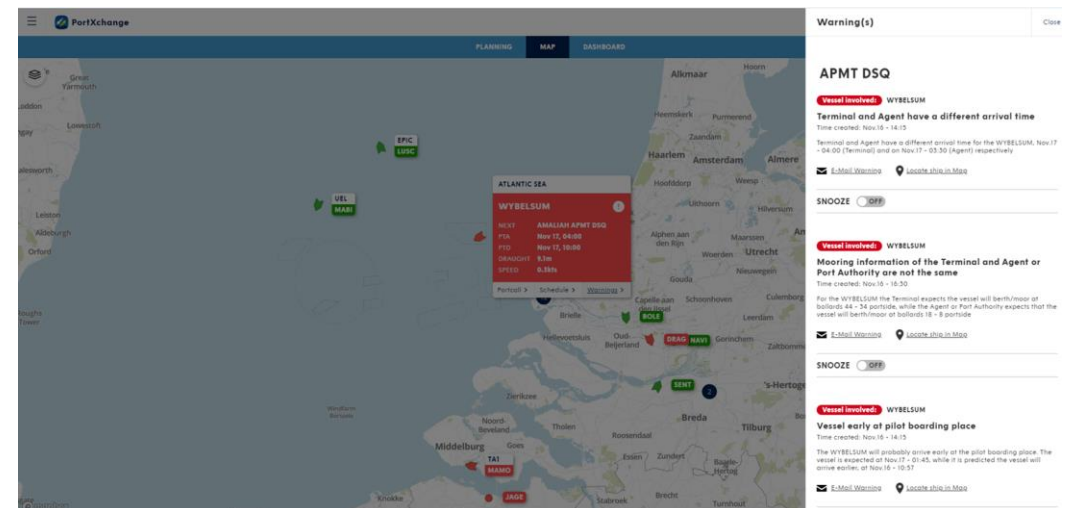
Shared platform for efficient collaboration



Common situational awareness



Timely notifications and warnings



DISTRO PLATFORM



The Routescanner platform

Port of Shanghai > Basel

Port of Shanghai 30-11-2021
MSC

Port of Rotterdam 27-12-2021

Port of Rotterdam 29-12-2021
HAEGER & SCHMIDT

Port of Duisburg 16 JANUARI 2022

kombi verkehr, MSC, Hapag-Lloyd, SAMSKIP, UNIFEEDER, ZIM, CONTAINERSHIPS

Intermodal transportation

Deepsea | Shortsea | Rail | Barge

Port of Shanghai > Minsk

Port of Rotterdam 05-01-2022

Port of Bremerhaven 05-01-2022

Port of Bremerhaven 07-01-2022

Vienna 10-01-2022

GLEC GLOBAL LOGISTICS EMISSIONS COUNCIL

Find & compare container transport options

Neutral search engine

Port of Shanghai > Vienna

Port of Shanghai 30-11-2021
965 kg CO₂ e/TEU

Port of Rotterdam 31-12-2021

Port of Rotterdam 05-01-2022
70 kg CO₂ e/TEU

Port of Bremerhaven 05-01-2022

Port of Bremerhaven 07-01-2022
85 kg CO₂ e/TEU

Vienna 10-01-2022

GLEC GLOBAL LOGISTICS EMISSIONS COUNCIL

Sustainable connections

CO2 calculation

Routescanner facts & figures

Ecosystem



650.000 schedules in Routescanner;



4.300 terminals harmonized;



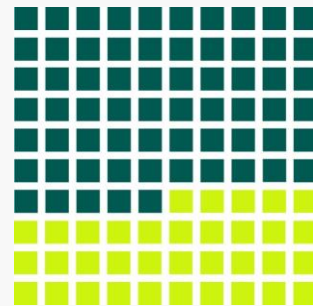
1.100 ports and inland hubs connected;



153 operators participate.



Over **60.000 door-to-door searches** this year from over 100 countries, currently averaging around 2.000-2.500 per week;

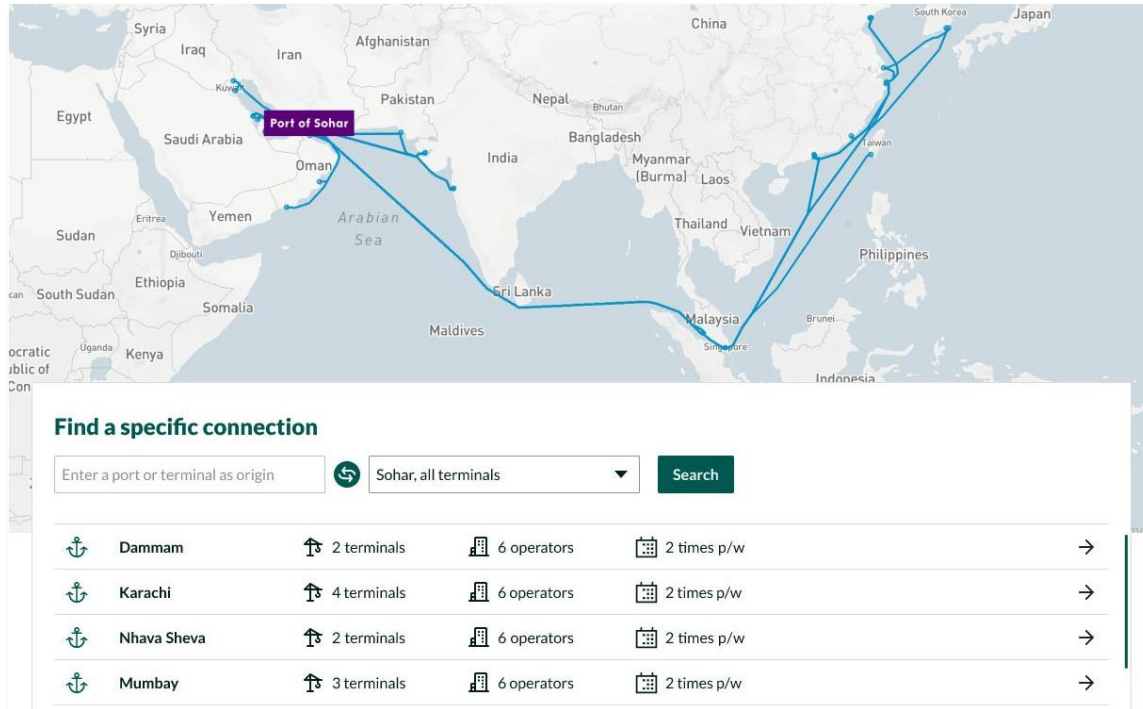


Over **12.000 visitors per month**, growing 20% month-on-month in 2022;

Over **2.500 registrations** by shippers, forwarders and other supply chain stakeholders.



The value for ports



Visualise your intermodal network

Visualise the inland and seaside network of your port. Our intermodal approach, which includes rail, barge, shortsea and deepsea, is unique. Provide your customers actionable insights on the attractiveness of your network and promote the modal shift.

Digitise your marketing

Leading ports assure they stand out from competition by promoting themselves digitally. Grow your website visits with our easy-to-use application and assure your clients get the most out of your website.

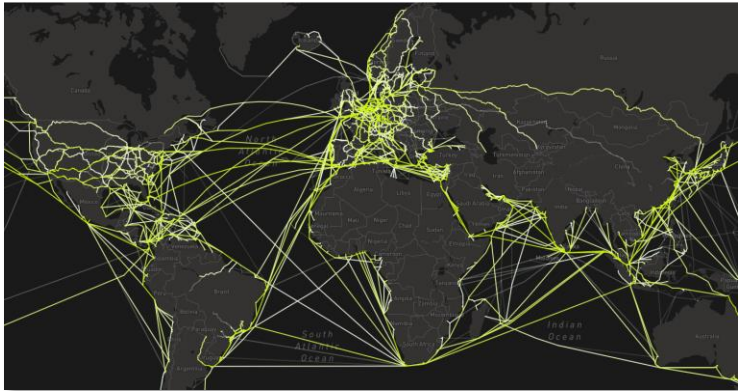
Attract more cargo

The Routescanner platform enables shippers and forwarders to explore connections on both known and unknown trade lanes. Join our ecosystem, attract cargo and realize new business opportunities for your port community.

Routescanner x Ports

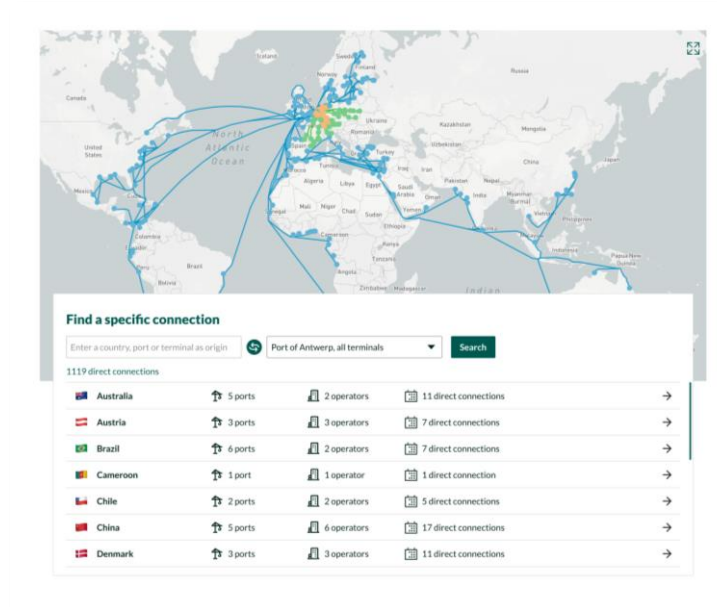
Operator network completion

Make sure your port's network is complete and visible in Routescanner by encouraging local & global operators to join the ecosystem.



Direct Connections for ports

Promote all direct connections to- and from your port across all modalities with the Routescanner Direct Connections for ports application.



'Propelling seamless global trade'

Naviporta makes exchanging assets and information possible in a digitally trusted and secure way:

- **Seamless flow of goods:** Gain real-time and end-to-end visibility on your containers.
- **Seamless flow of information/finance:** Companies and authorities involved have real-time access to the correct, validated information.
- **Improving trust and efficiency:** Immutably record what has been done by whom via the digital notary. And notarise shipping documents like eCMR, bill-of-lading or letter of credit.



Thank you